

Laterally stable steel springs housed in telescoping close-grain cast iron casing. Effective for isolation of high and low frequency vibrations produced by floor mounted mechanical equipment, industrial machinery, piping.

Product Features

- Springs have a deflection of 50mm at rated load and are designed with 50% overload capacity, to compensate for unexpected load variations and to reduce operating stress.
- Springs are laterally stable, with diameter to operating height ratios ranging from 0.85 to 1.0
- WEICCO SMC mount design provides horizontal stability, high loading capacity and protective spring enclosure.
- All mounts have a built-in leveling arrangement, capable of compensating for full static deflection.
- Inner walls of lower casing have resilient rubber snubbers which :
 - a) Limit lateral movement, particularly due to start-up, shut-down and horizontal wind load.
 - b) Eliminate possibility of binding by providing a smooth guide path for the top casing.
 - c) Prevent isolator short-circuiting by avoiding metal to metal contact.
- Neoprene inserts below springs and 7 - 10mm thick ribbed base pad act as noise breaks for high frequencies in the audible range, which can otherwise get transmitted to building structure.
- Base pad eliminates need for bolting down in most applications.
- Color coded springs to facilitate identification.
- Corrosion resistant, epoxy powder coated springs and body.

Compliance - Springs designed according to BS 1726 (Part 1) : 1987 and recommendations made by SAE (US)

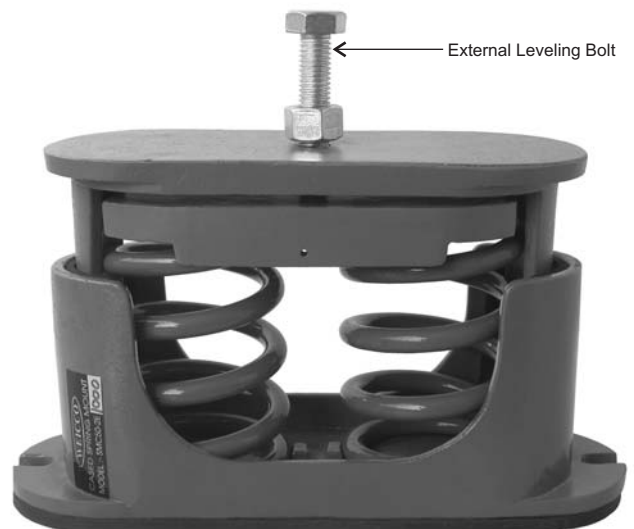
Typical Applications

SMC series mounts are suitable for installation under all types of equipment. Since the springs are laterally restrained in cased mounts, they are particularly recommended for outdoor installations subject to wind pressure and under equipment likely to generate horizontal thrust.

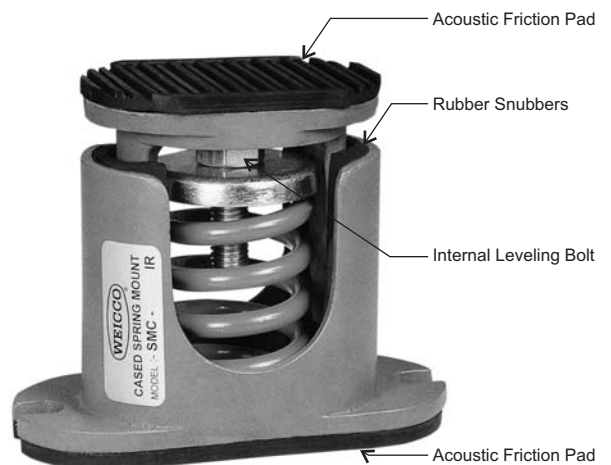
Application examples include : Chillers, AHUs, Pumps, Centrifugal / Axial fans, Condensing Units, Rooftop Packaged Units, Reciprocating Compressors, DG Sets, Punch Presses, Drop Hammers, floor Pipe Supports (normally at first few pipe support points leading from isolated equipment)

Installation

Spring mount cartons contain detailed installation guide.



Cased Spring Mount with External Adjustment (supplied as standard)



Cased Spring Mount with Internal Adjustment and Neoprene Pad on top (add suffix 'IR')

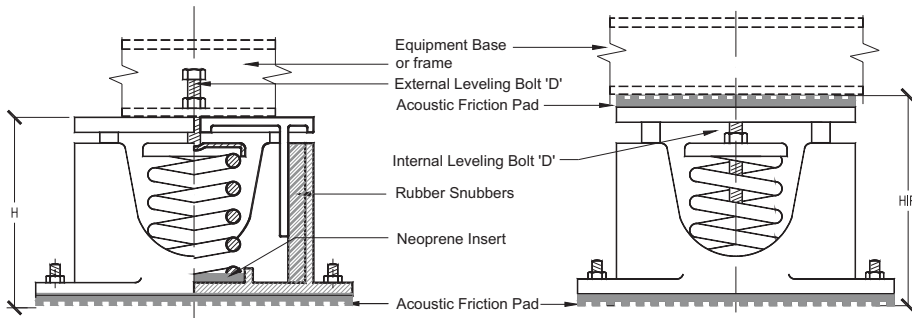
Options Available

- Mounts with external leveling arrangement are supplied as standard. These offer maximum convenience of installation and leveling. Bolt passes through locating holes of equipment. Suitable for most applications.
- Mounts with internal leveling arrangement and extra neoprene acoustic friction pad on top (add suffix 'IR'). Used when accessibility for external leveling is limited or under flat surfaces without locating holes.

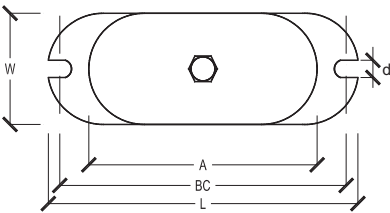
Please refer overleaf for selection table..

Selection Guidelines

- The calculated weight or published point-load data of equipment should ideally be increased by a safety factor of 10 to 15% and the next higher model of isolator selected.
- In calculating the load, please take care to consider variables such as weight of water and attached pipe fittings / valves, inertia base etc.



Cased Spring Mount with Internal Adjustment and Neoprene Pad on top (add suffix 'IR')



Cased Spring Mount with External Adjustment (supplied as standard)

SELECTION TABLE FOR 50MM DEFLECTION CASED SPRING MOUNTS										
Isolator Model	Rated Load (kg)	Spring Color(s)	Dimensions (mm)							
			L	W	H*	HIR*	A	BC	D	d
SMC50-B50	50	Red	165	67	135	155	107	145	1/2"	14
SMC50-B100	100	Yellow								
SMC50-B150	150	Blue								
SMC50-C200	200	Green	187	80	145	169	129	165	5/8"	14
SMC50-C250	250	Red								
SMC50-C300	300	Black	187	80	153	177	129	165	5/8"	14
SMC50-C400	400	Yellow								
SMC50-C500	500	Black / Green								
SMC50-C600	600	Yellow / Green								
SMC50-G700	700	Black	203	95	178	202	145	181	5/8"	14
SMC50-G800	800	Yellow								
SMC50-G1000	1000	Blue								
SMC50-G1200	1200	Blue / Green								
SMC50-G1400	1400	Blue / Brown								
SMC50-2G1600	1600	Yellow	311	95	188	217	253	289	7/8"	14
SMC50-2G2000	2000	Blue								
SMC50-2G2400	2400	Blue / Green								
SMC50-2G2800	2800	Blue / Brown								
SMC50-4G3200	3200	Yellow	295	185	197	231	237	273	1"	14
SMC50-4G4000	4000	Blue								
SMC50-4G4800	4800	Blue / Green								
SMC50-4G5600	5600	Blue / Brown								

* Represents average free height in each grouping of models. Height of some models in group may vary slightly from this figure.

Please refer overleaf for product details..